

Vulnerability assessment of the mangrove ecosystem in Ambaro Bay, Northern Madagascar

Heritiana RAKOTOMALALA¹, Lilia RASOLOFOMANANA¹, Fanja V. RAZAFINDRAMASY¹, Young Progress Association

¹ WWF Madagascar Country Office, WWF MDCO, B.P. 738, Antananarivo 101, Madagascar

DATA REQUIREMENTS

30 years temperature and rainfall data from National Weather Department (DGM)

Drought (DGM) and cyclones (Meteo France, Wikipedia, www.firinga.com)

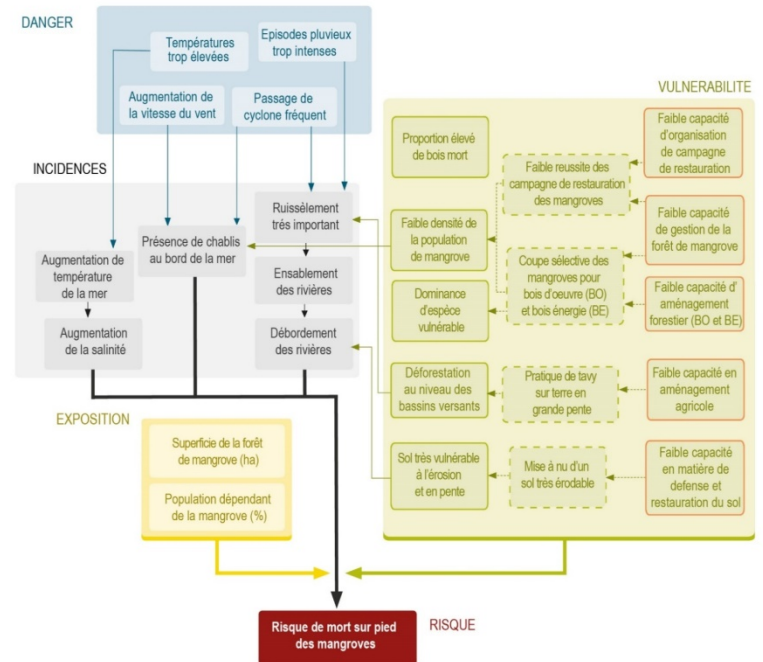
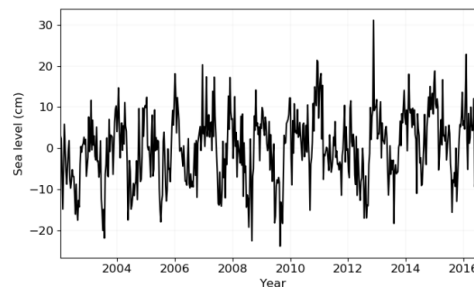
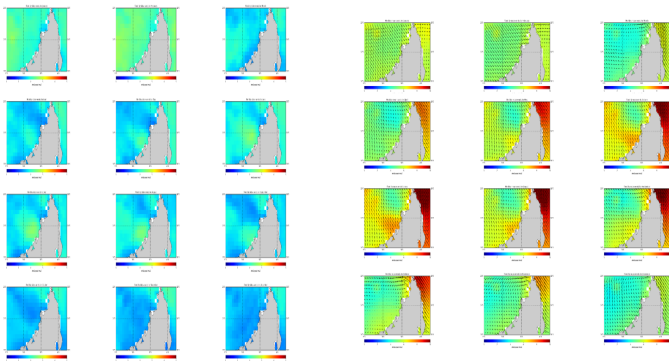
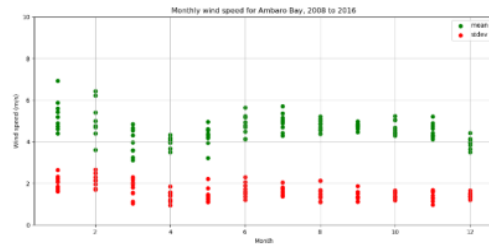
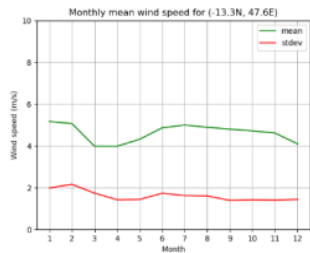
Wind speed and direction (C-RiSe data) from 2008-2016

Sea level rise height (C-RiSe data) from 2008-2016

Mangrove areas from satellite data from 1997, 2007 and 2017 (NASA/USGS)

Google Earth Image (Data SIO, NOAA, U.S. Navy, NGA, GEBCO Landsat / Copernicus)

Local perceptions (collected with Climate Crowd tools, WWF)



Level of priority	Surface (Ha)
1 (very high priority)	101.15
2 (high priority)	1618.23
3 (average priority)	3384.42

Financially and technically supported by

