

Madagascar Coastal & Marine Atlas (MaCMA): source of Geospatial Data & Information for Ocean & Coastal Zone Management.

Dr John Bemiasa

Institut Halieutique et des Sciences Marines (IH.SM)

j.bemiasa@odinafrica.net

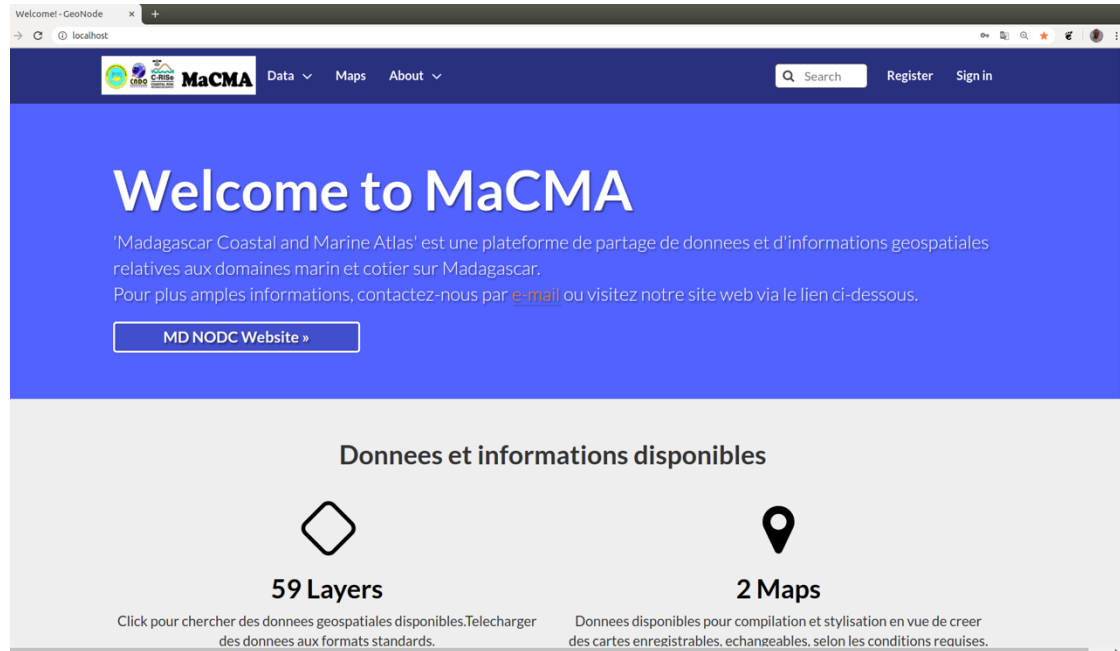
11th and 12th February 2020, Antananarivo, Madagascar

Purpose

The purpose of the Madagascar Coastal and Marine Atlas is to identify, collect and organize available geospatial datasets related to Marine and Coastal areas into an Atlas as a “**single access point**” to users (concerned scientists and students) and used as a toolkit for the development of decision-making process.

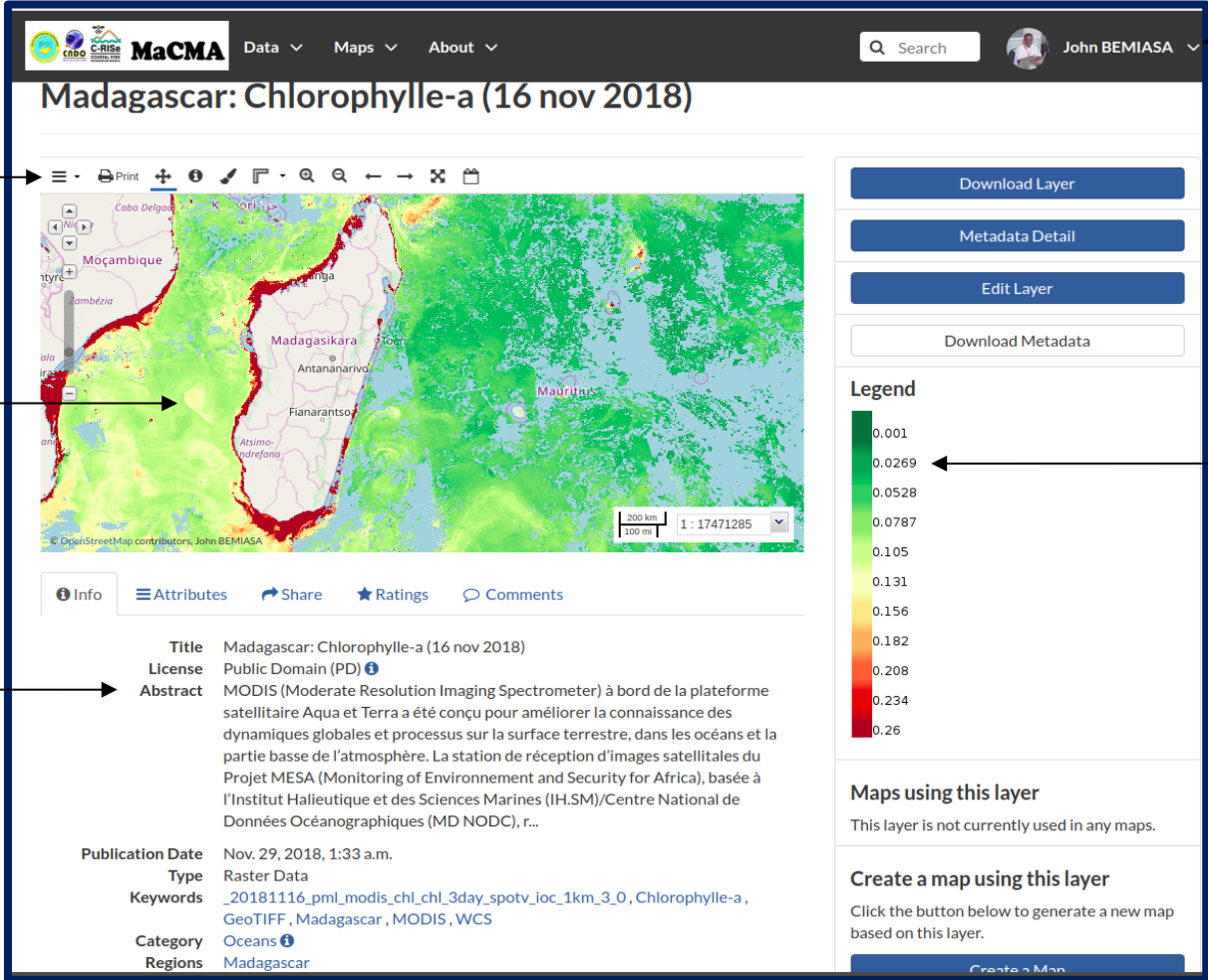


Technology used



Based on a MapServer application, the atlas contains raster, vector data from various sources and using Geonode extension as interface. The following image shows the front-page of the Atlas.

Technology used



Map tools

Interactive map

Layer information

Banner

View size

Legend

MaCMA Data Maps About

Search John BEMIASA

Madagascar: Chlorophyll-a (16 nov 2018)

Download Layer

Metadata Detail

Edit Layer

Download Metadata

Legend

0.001
0.0269
0.0528
0.0787
0.105
0.131
0.156
0.182
0.208
0.234
0.26

Maps using this layer

This layer is not currently used in any maps.

Create a map using this layer

Click the button below to generate a new map based on this layer.

Info Attributes Share Ratings Comments

Title Madagascar: Chlorophyll-a (16 nov 2018)

License Public Domain (PD)

Abstract MODIS (Moderate Resolution Imaging Spectrometer) à bord de la plateforme satellitaire Aqua et Terra a été conçu pour améliorer la connaissance des dynamiques globales et processus sur la surface terrestre, dans les océans et la partie basse de l'atmosphère. La station de réception d'images satellitaires du Projet MESA (Monitoring of Environnement and Security for Africa), basée à l'Institut Halieutique et des Sciences Marines (IH.SM)/Centre National de Données Océanographiques (MD NODC), r...

Publication Date Nov. 29, 2018, 1:33 a.m.

Type Raster Data

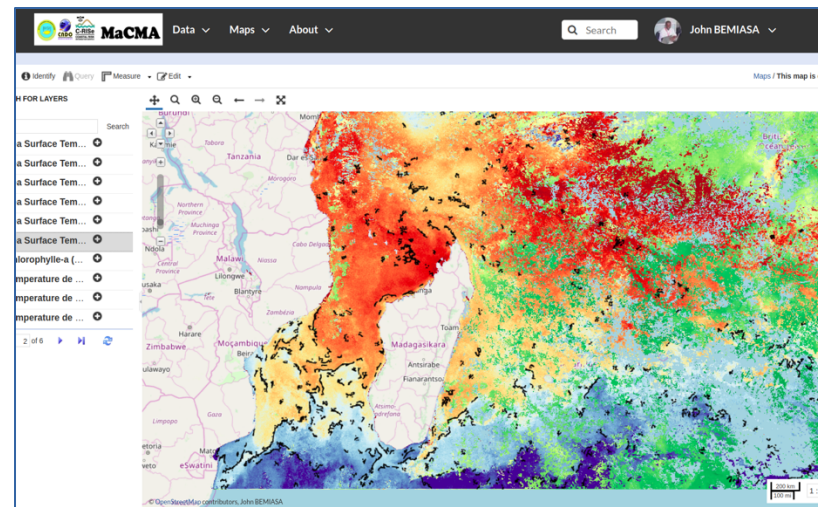
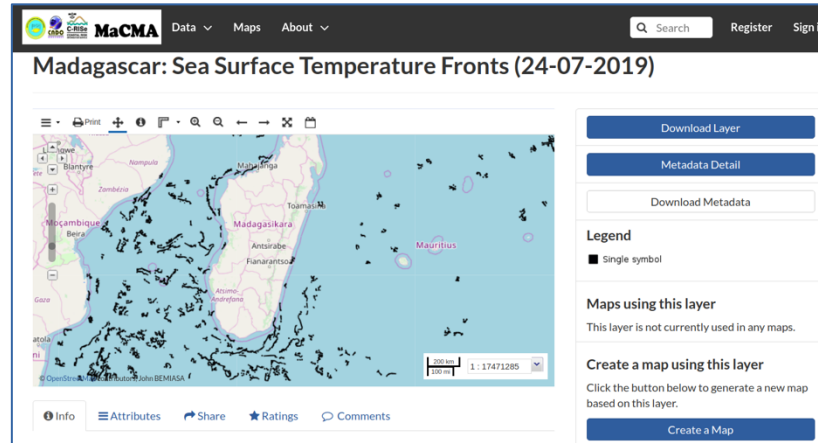
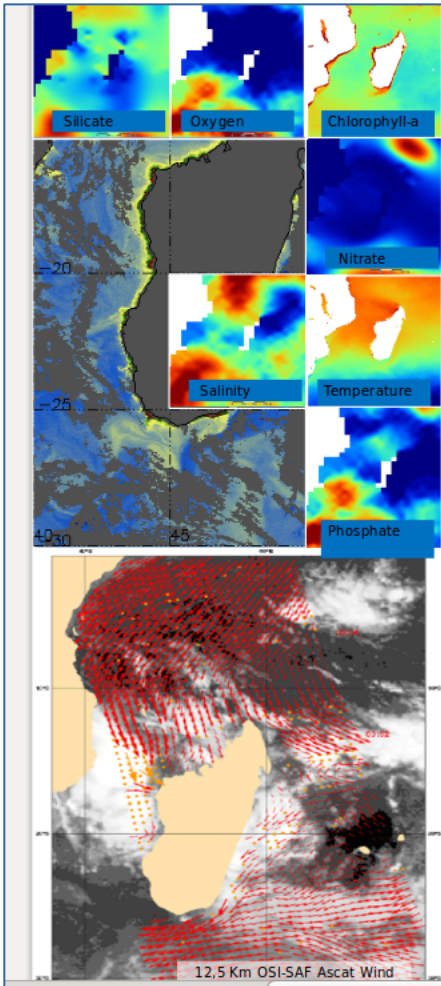
Keywords _20181116_pml_modis_chl_chl_3day_spotv_ioc_1km_3_0, Chlorophyll-a, GeoTIFF, Madagascar, MODIS, WCS

Category Oceans

Regions Madagascar

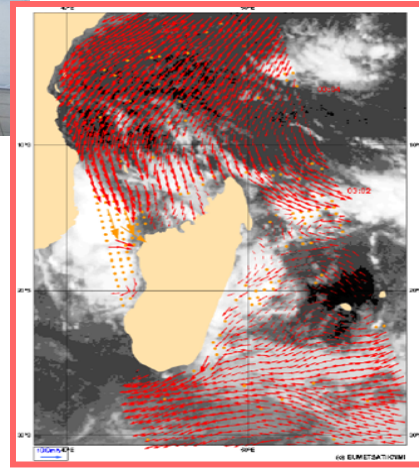
Fig.1: Global view of the Atlas front-page .

Contents



The major data components are Atmosphere (winds, air temperature, precipitation), Biosphere (mangroves, reefs, protected area), Human (localities, administrative boundaries, EEZ, ports index, railways, routes), Hydrosphere (chlorophyll-a, nitrate, nitrite, silicate, phosphate, dissolved oxygen, salinity, sea surface temperature, rivers and lakes), Geosphere (sediment thickness, bathymetry).

Process



Three regional workshops on Atlas development. As data comes from various sources, processing and analysis require a multidisciplinary skills. Regional datasets provided by C-Rise Project. QGIS and ArcGis were the main softwares used to produce maps and perform some specific analysis.

Way forward



▼ TYPE

Raster Layers

22

Vector Layers

37

> CATEGORIES

> OWNERS

> DATE

Actually, data in the atlas are available in various formats such as raster (geotiff maps), vectors (shapefiles) and documents. Total: 60 layers (37 vector files, 22 raster files, 1 map). Looking for more national data to be included in the Atlas. Here bellow are some results of requests made in reef and mangrove areas, showing the capabilities of Geonode making requests from specific layers.

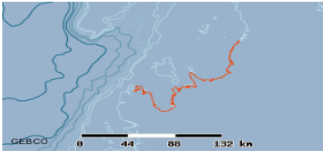
Way forward

Identify Feature Results

Found 2 Layers

- bathymetry madagascar (1 feature)
- mangrove madagascar (1 feature)

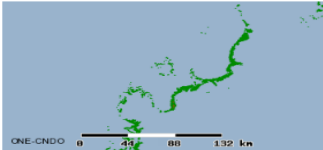
bathymetry madagascar (1 feature)



CEBCO 0 44 88 132 km

DEPTH:

mangrove madagascar (1 feature)



ONE-ONDO 0 44 88 132 km

mangrove madagascar (1)	
ID:	841
MANG:	1
COUNT:	82510
AREA:	0.00200000
PERIMETER:	0.86200000
HECTARES:	0.00200000
TYPE_ID:	1

CORDIO CORDIO Blog CORDIO Social

Research Outputs Management & Action Policy About us

High Impact Publications

Status Reports

CORDIO Status Report 2008

WIO Tsunami alert – 11 April 2012

Assessing Tsunami Damage to Coral Reefs (2004-5)

SWIOFF Offshore Fisheries Report: their status and the impact on vulnerable species

Marine Spatial Atlas for the Western Indian Ocean

Background and supporters

Why a geo-portal?

Geographic Scope

CORDIO GIS

Accessing and sharing data

WIOMSA Scientific Symposium

Coral Red Listing – IUCN

MASPAWIO


Marine Spatial Atlas for the Western Indian Ocean

An open access geospatial data repository for the Western Indian Ocean

MASPAWIO provides access to marine spatial datasets, providing layers useful for marine spatial planning, management and research, from multiple primary and secondary sources, and contributing compiled information into other regional and global repositories.

[go to datasets](#)

The MASPATIO geo-portal was established by:



Possible link to the regional Atlas network

<http://www.africanmarineatlas.org/Madagascar>

The Madagascar Coastal & Marine Atlas Project is funded by C-Rise & ODINAFRICA Projects.