



Figure 1. Madagascar with presentation of sites of intervention CAZ, COFAV and especially Ambodivahibe MPA

## Methodology and Approach

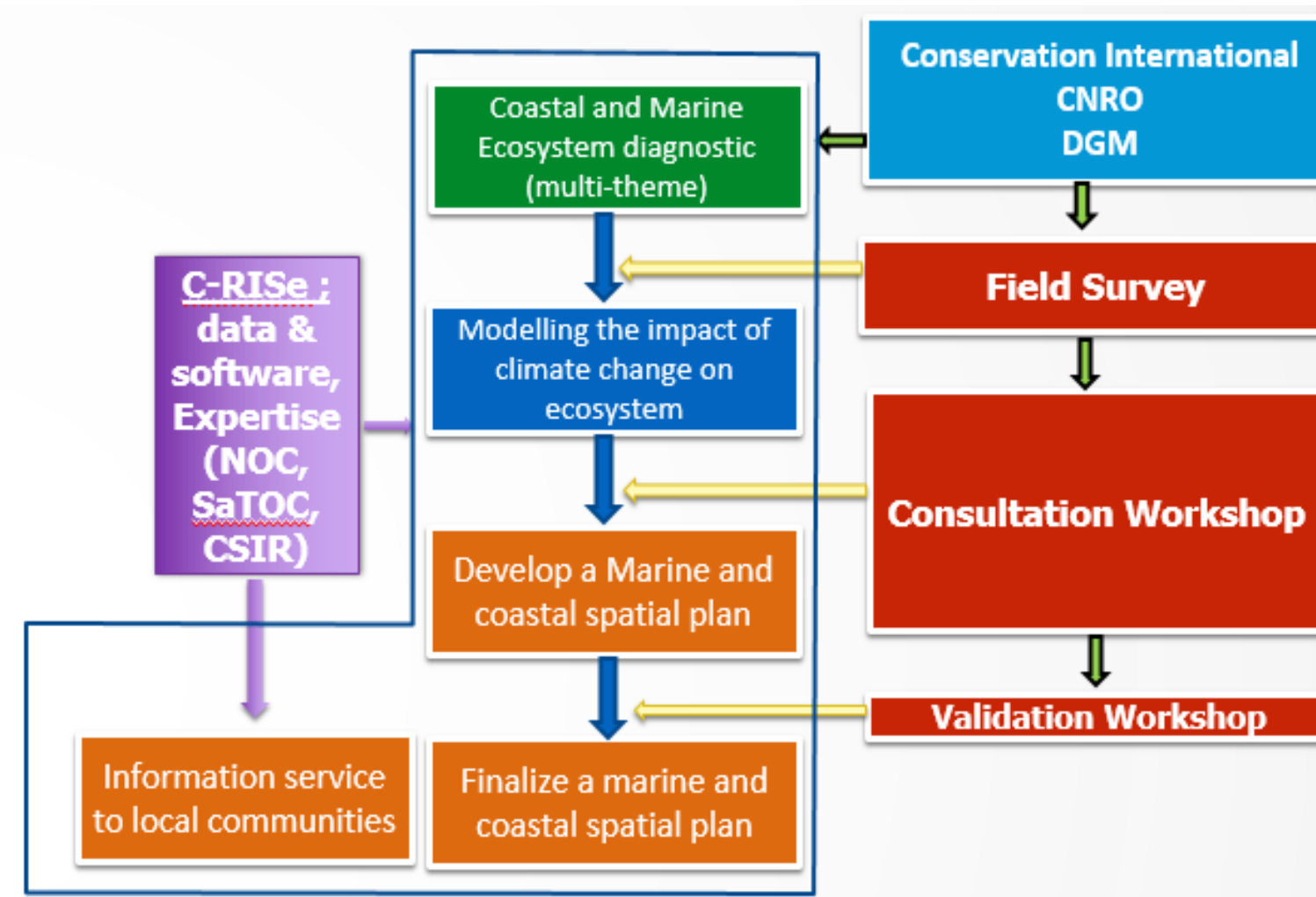


Figure 2. General approach and methodology

## Diagnosis of Coastal Ecosystem

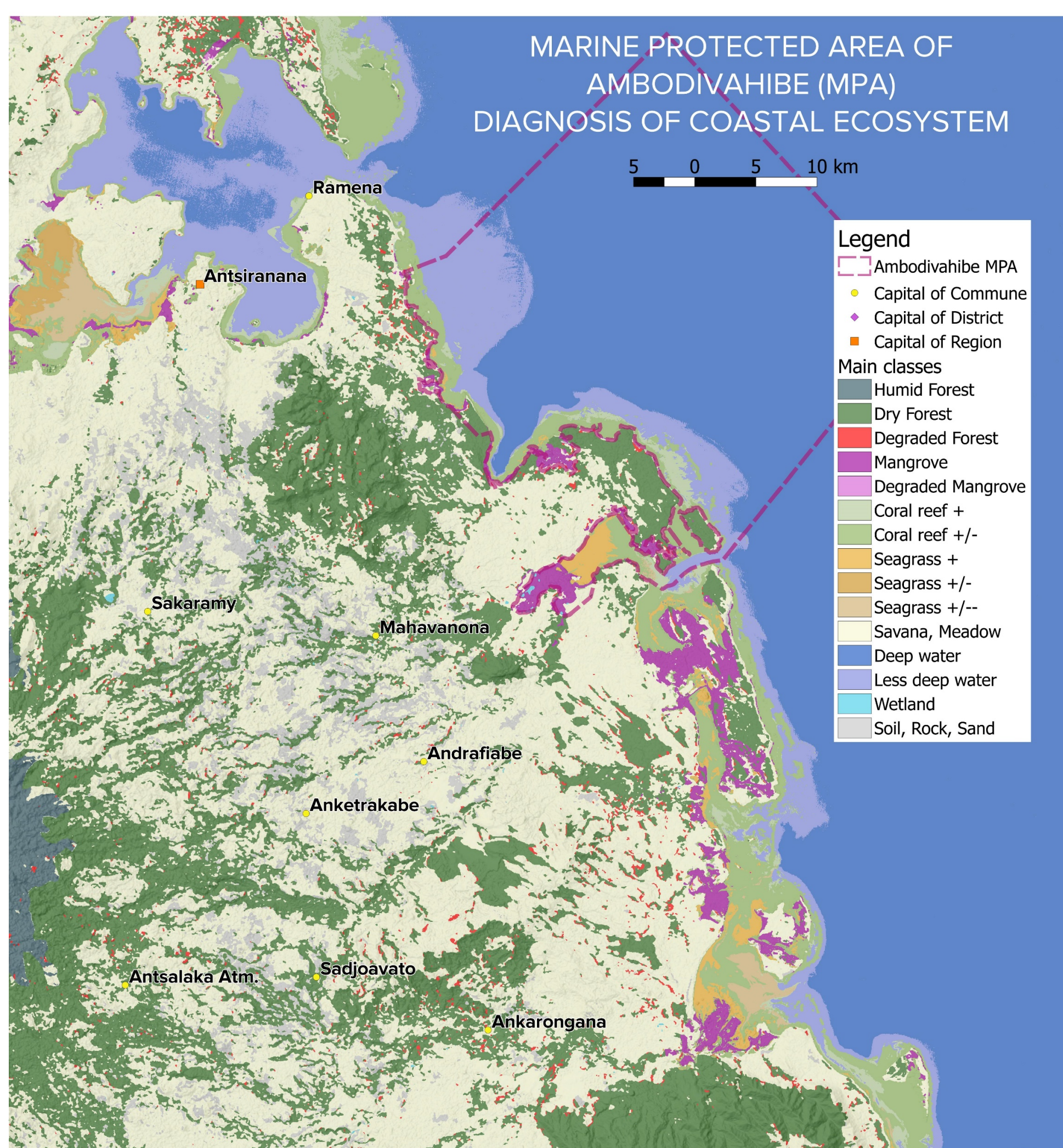
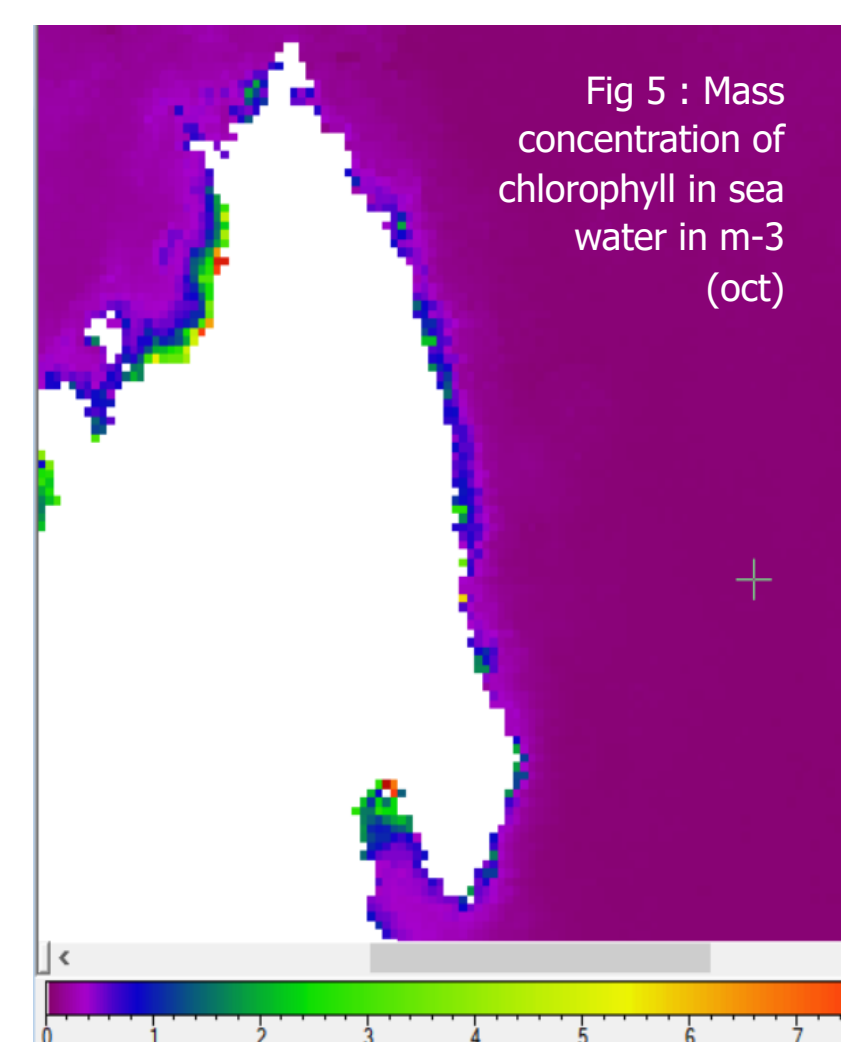
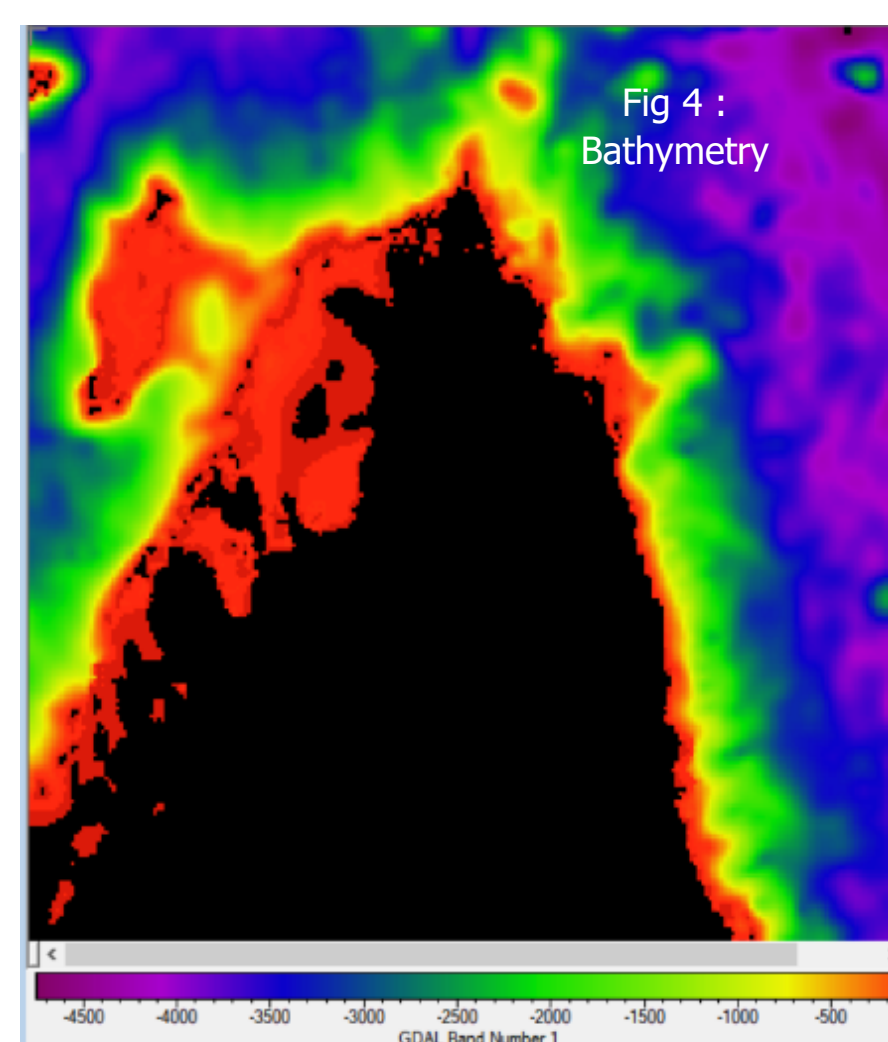
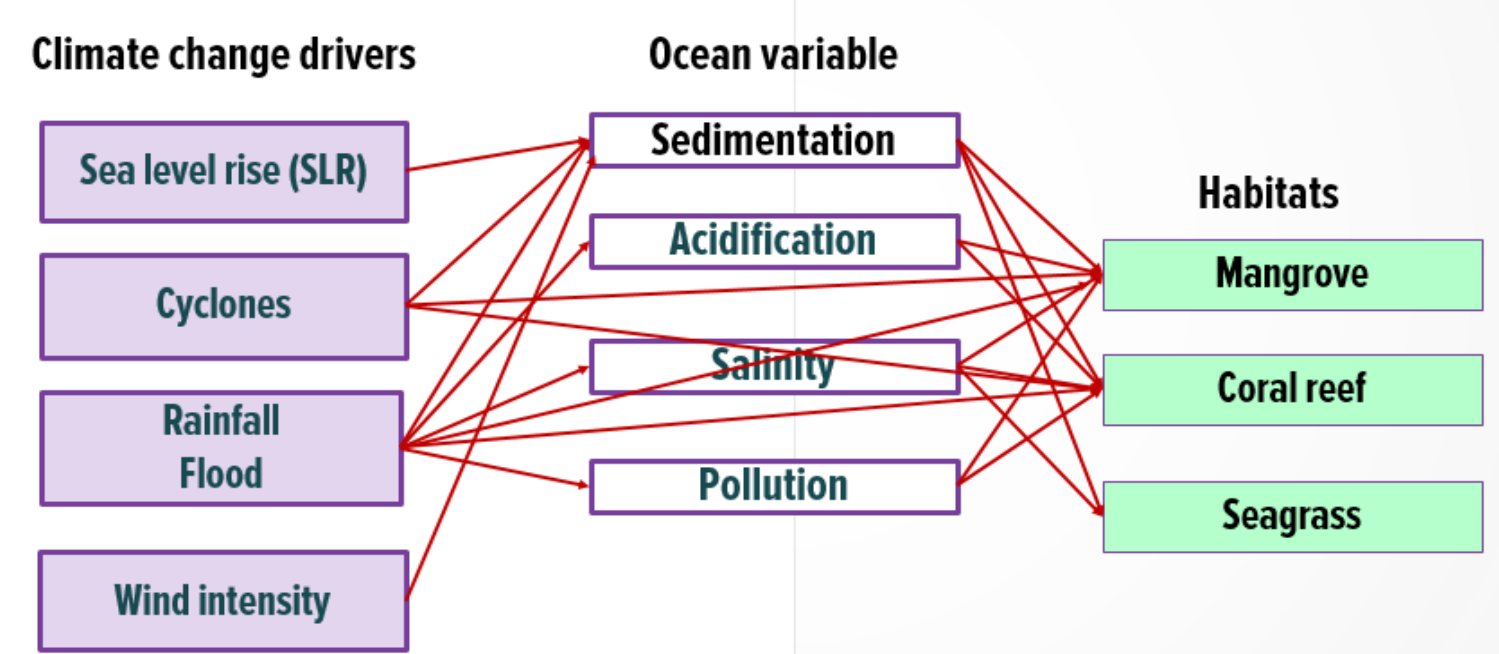


Figure 3: Map showing the diagnosis of Ecosystem

## Diagnosis of coastal ecosystem



## Establish links from climate change drivers



## Proposed Protection and Management plan

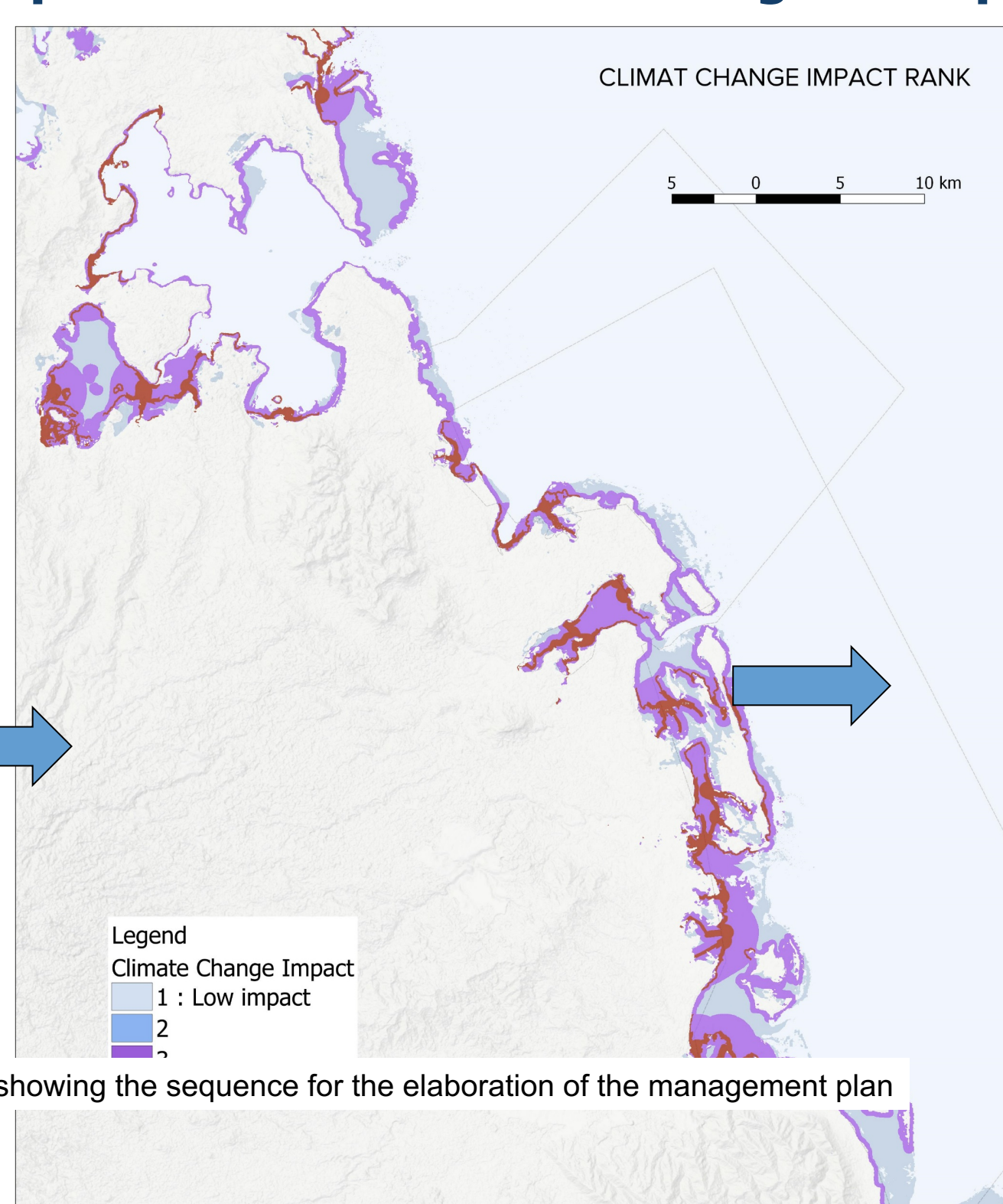
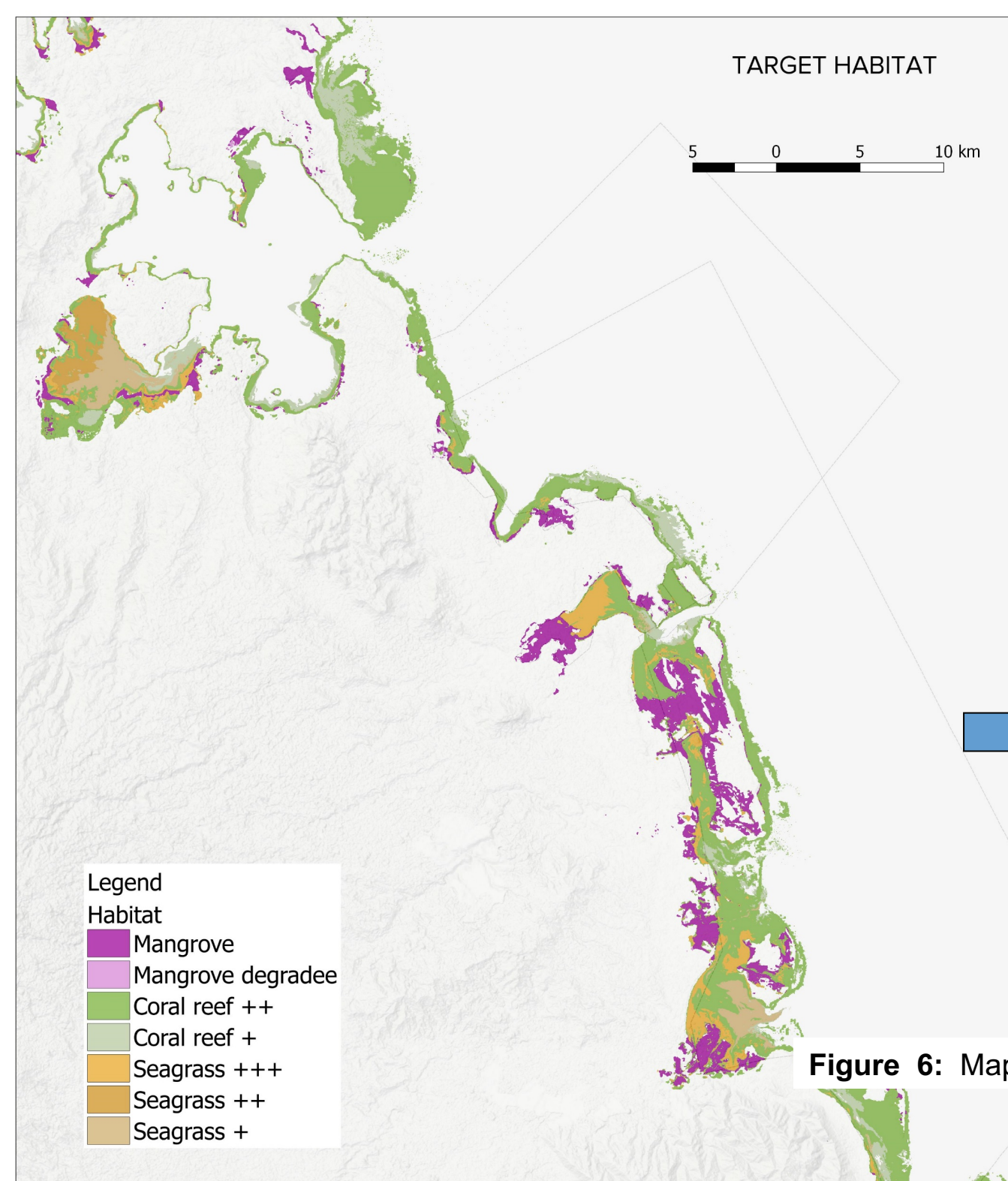


Figure 6: Maps showing the sequence for the elaboration of the management plan

